

Panoramic/Cephalometric

Easy 3D/2D diagnostics.

- Built around your needs.
- Advanced, fast, simple imaging system that minimises X-ray doses and maximises image quality.
- Flexible, comprehensive imaging - indispensable these days - that revolutionises the way you work by taking your surgery's diagnostic potential to a whole new level. **Improve your day.**
- Setting-free
- Easy to use
- Real-Time Diagnostics
- Innovative design, flexibility and user-friendliness.



SOFTWARE

iRYS, your simple tool.

One software for 2D and 3D scans.

Everything you need to carry out diagnoses, communicate with the patient and effect the best possible treatment. Optimised images with automatic filters.

Empower your performance.

- Multi-Desktop 3D/2D
- 2D PIE (Panoramic Image Enhancer)
- 3D SMART
- Implant simulation





2D Focus-Free System

One-click PAN examination with MRT (Morphology Recognition Technology) and automatic best focussing selection



3D MultiFOV System

Ultra-high resolution CBCT examination (80 μ m) with the possibility of making a single scan of the entire dentition (FOV 10x10) or a scan of different, limited portions (MultiFOV) to reduce exposure to the region of interest.

Versatile diagnostics

The 3D/2D system offers the best response to your diagnostic needs. Flexible, efficient, fast.

Cutting-edge high definition 3D technology and fast-scan 2D MultiPAN.

Maximum results with minimum times and low X-ray doses.

Always by your side

Maximum one-touch performance.

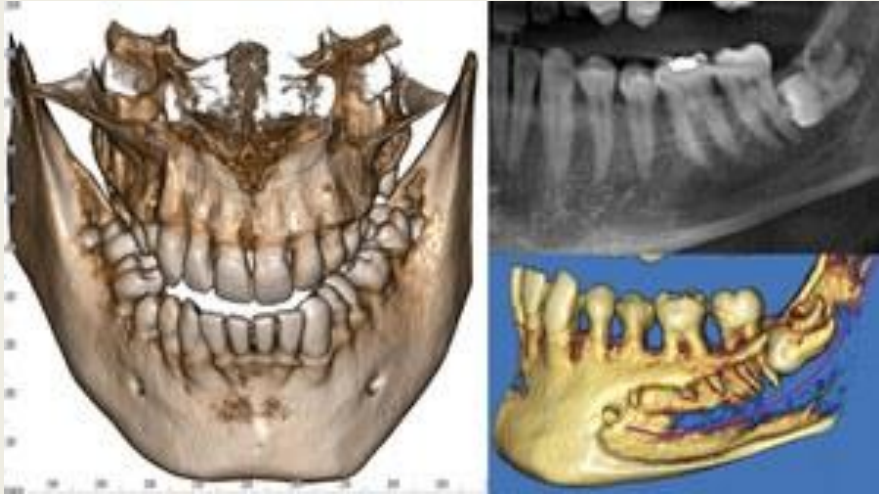
Hyperion X5 simplifies your work by allowing extremely fast scans that give real-time images at minimum X-ray doses. Easy for you, comfortable for the patient.

Let your work flow

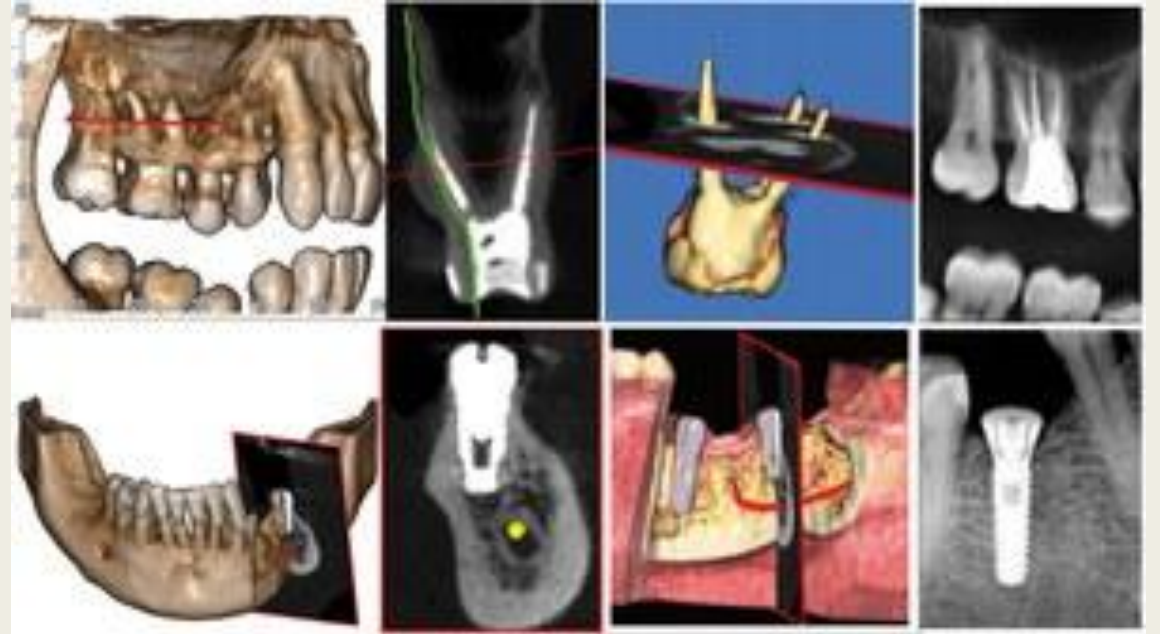
- 2D Focus-Free
- Stable positioning, made easier by the use of 3 laser guides
- MRT (Morphology Recognition Technology)



CASE STUDIES



COMPLETE DENTITION IN 3D(ADULT)



LOCAL (LOW DOSE) ANALYSIS IN 3D

Panoramic/Cephalometric/3D CT

The versatile imaging capability provides the user with accurate information for implant planning.

- - 7.7 sec Fast Scan for 3D image - Dedicated three sensors for each mode
- The structure is optimized for safety, stability, and durability. - Balance prevents position errors during scan - Stability reduces installation requirements
- Multi-FOV Selection (4x5, 14x14) Multi-F.O.V. selection enables accurate scanning whilst keeping dose levels to a minimum. FOV 4x5, 7x7, 8x8, 14x8, 14x14
- Automated sensor switching for each scanning mode. Auto-swing system positions the appropriate sensor without manual intervention.
- User Friendly Face to face positioning / Fit each individual's jaw shape. / Voice support system / Hand switch / Emergency switch / Wheelchair accessible



RXDC, Hypersphere technology

- Innovative design, revolutionary ergonomics, advanced technology..
- RXDC - HyperSphere technology can, thanks to the full-swivel ball joint, reach any position with ease.
- With the wireless remote controller, the multi-mode option and the 28 adjustment levels according to sensor sensitivity, RXDC HyperSphere technology offers full adaptability to any operating requirements.
- A constant potential head tube (8 mA) with a tiny focal spot (0.4 mm at 30 cm) produces optimal images under all circumstances.
- Built with high quality materials, the device comes with comprehensive equipment.
- Versatile and easy to install, this X-ray unit offers dependability in every situation.



- **Hyper Ergonomy:** RXDC - HyperSphere technology can easily reach any position thanks to its revolutionary ball joint.
- HyperSphere technology gives the RXDC unit full rotation capability.
- The tube revolves freely around the joint, allowing it to reach practically any position, including the vertical.
- RXDC - HyperSphere technology also features an automatic touch-sensitive device for simple, efficient locking/release of the X-ray head tube so it can be repositioned effortlessly between one exposure and the next.
- Ergonomic zones on the sides of the head provide a firm grip for effective positioning.
- Electro-brake with touch-sensitive control
- Infinite position range
- Maximum versatility
- Complete reliability



Simple and immediate: wireless

- The wireless remote controller lets the user control the device (by communicating with the X-ray tube) while enjoying full freedom of movement.
- Access to exposure programmes is provided via two simple settings.
- The large display shows the sequential exposure monitor and the patient exposure dose; moreover, the controller has a wireless X-ray snapshot button.
- Wireless device control allows fast, easy installation: no fixed control panels are required, thus providing greater freedom when positioning the X-ray unit.



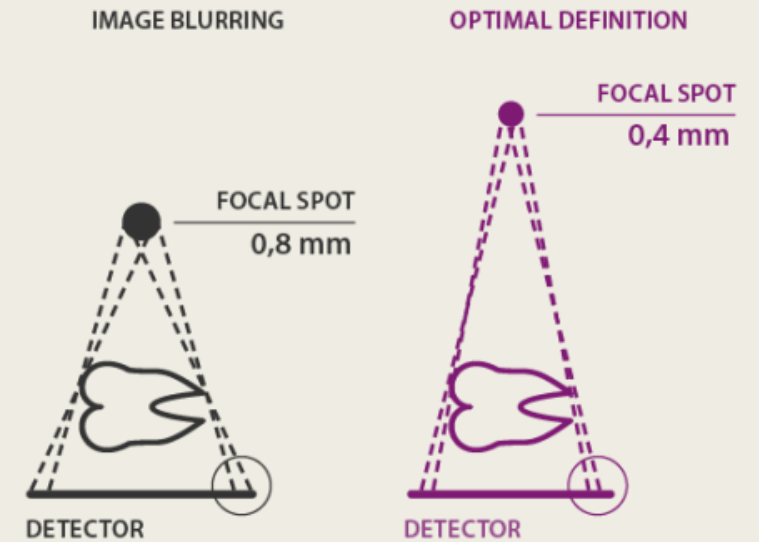
Installation versatility

- The extruded aluminium arms - available in lengths of 40 cm, 60 cm and 90 cm to ensure outstanding installation versatility - are equipped with an integrated self-balancing system.
- Solid and light, they can be pointed in any direction and reduce any risk of tube head vibration during image acquisition.



Hyper Performance

- Sharp images at all times RXDC - HyperSphere technology provides your surgery with optimum X-ray quality whatever the type of sensor connected.
- Now even more powerful, with 70 kV and 8 mA, even more flexible and suitable for all commercially available sensors.
- The constant potential head tube, associated with the smallest intraoral imaging focal spot available (0.4 mm), ensures the best images whatever your diagnostic needs.
- In RXDC - HyperSphere technology, advanced ergonomics, technological innovation and revolutionary design merge to provide users with ultra-sharp images.



Maximum quality

- With a tiny focal spot of 0.4 mm (at 30 cm), RXDC - HyperSphere technology produces sharp images under any condition.
- The tube head is now even more powerful as it operates at 70 kV, 8 mA. RXDC - HyperSphere technology gives your surgery the precision and quality of cutting-edge know-how.

Minimum X-ray dose

- The constant potential high frequency (DC) generator reduces the most harmful low energy radiation that is characteristic of analogue (AC) generators: current is adjustable (from 8 mA to 4 mA), as are exposure times.
- Moreover, the long cone (30 cm) with incorporated rectangular collimator reduces the exposed surface area. This maximises image quality and safeguards patient and worker health.



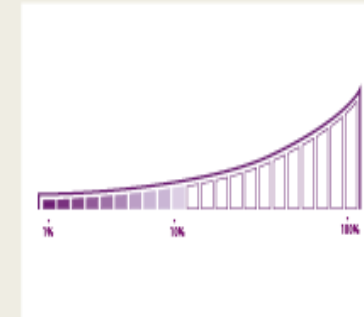
Multi-Mode

- Maximum flexibility to meet your diagnostic needs.
- Automatic parameter modulation ensures exposure power and time are always selected according to the patient's build and the specific region of investigation.



Sequenced exposure

- The dynamic service cycle allows uninterrupted use of the RXDC, as in the case of systematic examinations, and real-time monitoring of tube head temperature on the large wireless controller display.



Complete equipment set

- RXDC - HyperSphere technology features a 30 cm cone with a circular and rectangular collimator.
- The rectangular collimator is ideal for reducing the X-ray dose administered to the patient as it limits the irradiated body area to the effective capture capacity of the sensor.



C-U2

Imagine new perspectives.

Portable, simple, fast: high definition and technological reliability, as part of a miniature revolution.

C-U2 becomes your new method of working, communicating, imagining.



It shows the patient, in real time, images and footages for the sake of direct and effective communication.

Precise, sharp and clear, only C-U2 offers you clear and contrasted images under all circumstances. It shows/visualizes the aesthetic aspect of a smile or a single tooth with maximum high resolution. The best.

IMAGINE. Professional optical system and uniform field of view, - distortion-free. Thanks to the F/8 lens aperture and the innovative **HD** sensor, you get homogeneous lights and natural colours. Under all circumstances.

MOVE. Multifunction button and automatic Focus-Free adjustments: view, browse, enlarge, save. The flexibility of a Track Pad in just one button and automatic parameters for maximum comfort, with maximum results. The 360° backlight visualizes the state of the handpiece under any condition of use.

SHARE. Communication with the patient has never been so simple: view, share, inform. All in one click. Store and process images on the PC thanks to iRYS, the latest-generation MyRay software platform. View captured images on the iPad immediately and share your diagnoses with ease.



- **HD** sensor (16:9)
- 8 powerful LED's with optical diffuser
- Optical group with 7 high purity glass lenses, F/8
- 50x enlargement - 100x with Macro Cap
- Direct Digital USB Technology

C-U2 is innovative because it offers very high quality images and is easy to use. Maximized field of view, 7 glass lenses, diffused illumination with 8 LED's and a last generation 16:9 sensor. Excellence at your service, at any moment. And to ensure you don't miss a single detail, application of the Macro Cap, which incorporates another two glass lenses, instantly provides you with 100x magnification.

Plug & Play. Digital video system incorporated in the handpiece for complete flexibility and perfect freeze-frames. The camera can be moved easily among various workstations. iCapture software features automatic switch on/off, live video feed and a freeze frame function. As simple as imagining.

Distal areas. Perfect under all circumstances: thin tip (9.5 mm) with optics boasting a wide field of view (90°), partially retroflexed for the sake of very comfortable intraoral investigations.

Nimble and precise, with a distance of only 8 mm between the centre of the optics and the end of the handpiece. The innovative multifunction button ensures



Secure connect. A connector reinforced with stainless steel and the flexible USB cable make the hand piece nimble and safe to use under all circumstances.

C-U2 quickly connects to your laptop and is easy to use, thereby always offering you the best results in the shortest time possible. Full examinations, maximum reliability and flexibility,

FULL DEPTH VISION.

Exceptional depth of field simplifies multi-purpose usage of the camera, allowing users to frame a face or smile or zoom in on a single tooth; moreover, the Macro Cap allows magnification of up to 100x.

Easily applied or removed, the Macro Cap is an indispensable accessory for those who want to get the most from the ultra-high resolution of the C-U2. The cap acts as a light guide to optimise lighting of details located close to the optical unit, which incorporates 3 additional, high purity glass lenses. The macro images shown on the dental unit or PC display are extremely sharp.

- Depth of field 1-70 mm
- Magnifications of up to 100x
- Super HD detail



X-pod Portable imaging system

The new high definition intraoral imaging vision

Acquire, display, process and manage every detail directly in the palm of your hand on the most versatile, modern device available. X-pod, the exceptional portable wireless device with large touch-screen display, let's you take control and decide how to manage your workflow, letting you enjoy fast consultation, storage and sharing of diagnostic images. Acquire intraoral X-rays, view them and show them to your patient immediately to ensure more effective communication. You can synchronise it with the iRYS software on your PC or work in complete independence, saving and processing images on the SD memory card.

Portable, versatile, high quality diagnostic.

- Immediate diagnostics
- Real-time image processing
- Portability and working freedom
- Synchronisation with PC - iRYS software
- Bluetooth image transfer



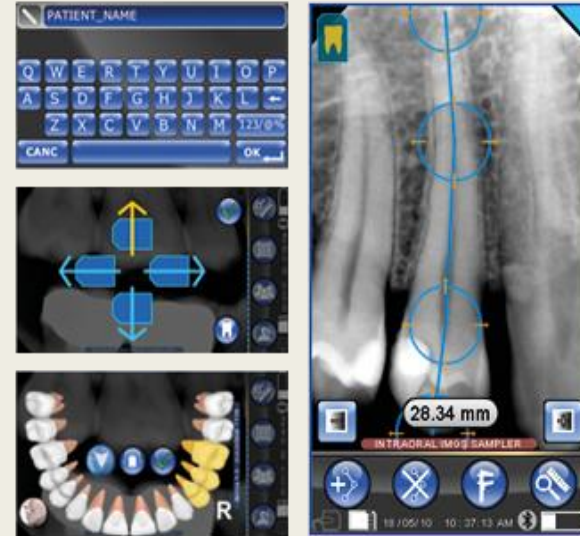
Ergonomic, reliable, durable high definition sensor

- The sensor features ergonomic design with rounded corners, a thin profile and a flexible lead; all this ensures adaptation to the anatomy of the oral cavity and efficient, comfortable positioning.
- The optic fibres layer (Fibre Optics Plate) collimates the radiation, ensuring clearly defined images and protecting against direct X-ray penetration to extend the working life of the sensor.
- The X-pod sensor is made of exceptionally high quality materials and is resistant to impact, liquids and dust.
- Available in size 1 and size 2, it adapts to all types of examination.



Stores and processes images directly on the device

- Powerful X-pod software provides an array of advanced functions with an intuitive graphic interface that lets you save and process images directly on the device without any need for a PC connection.
- Edit the patient name
- Modify filters to improve luminosity and contrast
- Measure point-to-point distance and calibrate the image
- Assign the dental region on the Dentition Chart
- Correct image rotation



Long battery life and portability

- X-pod is compact, pocket-sized and offers outstanding battery life.
- The lithium polymer battery allows day-long use, inside and outside the surgery, without ever having to worry about charging.
- Images are saved and organised in patient-specific folders on the removable Secure Digital memory card.



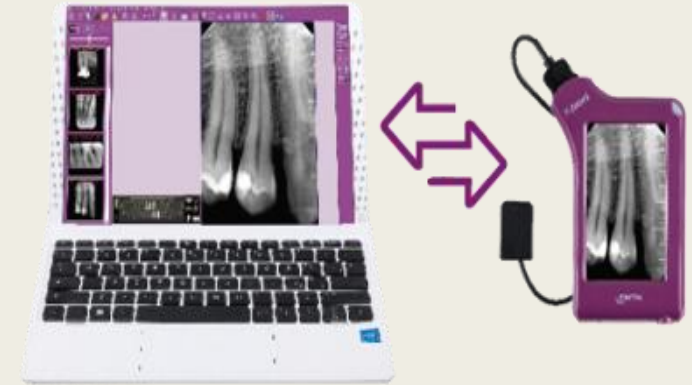
X-pod can be installed on any surface

- When it's not in the palm of your hand, X-pod can be stowed in the smart Holster.
- This holder that can be installed on any surface, such as on the arm of your intraoral X-ray unit.
- Thanks to the efficient, adjustable system, the image can be rotated and the display tilted to give the best viewing angle.



Worklist - iRYS software

- Set up the patient acquisition list from the PC using the outstanding all-in-one iRYS software and consult patient folders on the X-pod screen.
- Acquire images, then display and save them directly in patient folders with all the correct position and size data.
- Transfer and synchronise data on the PC-based iRYS database with a USB lead at the end of the day or instantaneously via Bluetooth using secure interference-free transmission technology (Patented)..



Thank you!