

# Dental Materials



sikelela  
Holdings (Pty) Ltd

345 Brooklyn Road/ Cnr 13th Street , Menlo Park  
P O Box, Sunnyside, 0132 ,South Africa  
Tel ; +27 12 346 3072 ,+27 86 247 7986

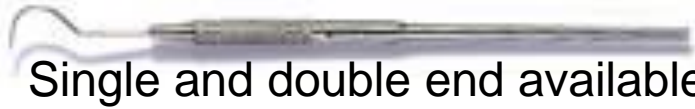
## 20/20™ Double-Sided Mirrors



- Excellent access to hard-to-illuminate areas of the mouth.
- Retract the tongue and reflect light simultaneously.
- Provides an unobstructed, shadow-free view of contralateral molars.
- Rhodium-plated, stainless steel.
- Fully autoclavable.
- Available exclusively in size No. 5 (1" diameter).
- Fits cone-socket threaded handles (**not included**)
- Comes with 6 mirrors in a box (**handles not included**)

**Mirrors are autoclavable or sterilizable by any method (except dry heat). DO NOT CLEAN ULTRASONICALLY. Available in size No. 5 for cone socket threaded handles (not included).**

## Explorers



Single and double end available.

## Carvers



All styles available.

## Forceps



## Galil Diamond Burs



## Lathe Carbide Burs



## Cotton Pliers



All sizes available.

## Elevators



All styles available.

## Pluggers



## MIDWEST TYPE - Carbide Burs FG



## MIDWEST TYPE - Trimming & Finishing Burs



# Foramatron Apex Locator



- Precisely pinpoints the apical constriction using high and low frequency bands.
- Ergonomic, aseptic design.
- LED illuminated display for easy viewing.
- Four distinct audio signals reinforce the indicator lights.
- Reliable results even in the presence of all types of fluids.
- Uses a replaceable, inexpensive 9-Volt battery.
- Includes detachable autoclavable cables.
- Also self – calibrates for each patient and each tooth

- Foramatron also self-calibrates for each patient and each tooth.

## Digitest™ II Pulp Vitality Tester



- Designed for optimal ergonomics and easy handling.
- Automatic one-button operation.
- Three rates of stimulus increase – slow, medium and fast.
- Unit remembers the previous rate of speed programmed.
- Micro-processor performs a self-test assuring proper function of the unit every time.
- Unit comes with 4 autoclavable probe tips.
- Runs on easily replaceable 9-V alkaline battery.

### **In the box**

- 4 autoclavable probe tips; 1-standard long, 1-standard short, 1-labial and 1-lingual
- Ground Wire & Clip
- 9-Volt Battery

# ENDODONTICS

The background features abstract, overlapping geometric shapes in various shades of green, ranging from light lime to dark forest green. These shapes are primarily located on the right side of the frame, creating a modern, layered effect. The rest of the background is plain white.

## Citra Wash



### Overview:

- Cleansing/conditioning of prepared canals, and
- Dissolving/cleaning residues of calcium hydroxide.
- Removing smear layer.
- Root canal irrigation solution based on 20% citric acid.
- Comes in a 30ml Bottle

# Dent Wash



## Overview:

- Aqueous EDTA.
- For smear layer removal.
- Use before bonding of dentin.
- Use before root canal sealant.

## **Product information:**

- Dent wash is formulation of aqueous 17% EDTA which shall not crystallize or precipitate powder. EDTA is well known in dentistry for its efficacy in surface treatment to dentin.
- Dent wash also contains quaternary ammonium surfactants for better flow.
- It is best suited for irrigation of root canal or cavity before final filling.
- Flooding of the root canal or cavity for 2 minutes shall offer smooth surface of the walls. This surface treatment shall remove smear layer and permit flow of sealant, cements & bonding agents.

## Dent Dry



## Overview:

- Dentin drying and cleansing agent.
- For having moist dentin surface.
- Use before bonding of dentin.
- Use before root canal sealant.

## Product information:

- Dent dry is a liquid formulation ideally suitable for degreasing and drying of dentin.
- Can be used before any filling material.
- Root canal sealants and dentin bonds may not flow properly in presence of excess moisture and even traces of oil/grease; Dent dry is highly useful in such situation



### **Overview:**

- Ready to use paste for intra canal temporary filling.
- Radio opaque Ca (OH)<sub>2</sub>.
- Contains barium sulphate.
- Highly alkaline.
- Can be easily removed by reamers.
- Non drying paste.

### **Product information:**

- RC Cal is a formulation of calcium hydroxide & barium sulphate in ready to use paste form.
- It is a highly alkaline radiopaque water soluble paste which could be easily cleaned and removed from canal whenever required.

### **In the box**

- Syringe of 2g & 5 Application needles.

## Medium Drill - Set-Complete



### Features/Description

- Glass fibre, plastic pattern or stainless steel posts.
- Each post style is available in two sizes - Fine and Medium.
- C-I™ White Posts give you strength, aesthetics and significantly enhanced radiopacity.
- C-I™ Plastic Pattern Posts are easily used for direct or indirect techniques.
- C-I™ Stainless Steel Posts provide maximum strength for amalgam or composite cores.
- All posts in the C-I™ System use the same calibrated C-I™ Drills for quick and easy placement.

### In the box

Includes one (1) ea. 'A', 'B' and 'C' drills (for use with All MEDIUM posts: S093, S094, S107, S112, S113, S114, and S119)

## Fine Drill Complete Set



### •Features/Description

- Glass fibre, plastic pattern or stainless steel posts.
- Each post style is available in two sizes - Fine and Medium.
- C-I™ White Posts give you strength, aesthetics and significantly enhanced radiopacity.
- C-I™ Plastic Pattern Posts are easily used for direct or indirect techniques.
- C-I™ Stainless Steel Posts provide maximum strength for amalgam or composite cores.
- All posts in the C-I™ System use the same calibrated C-I™ Drills for quick and easy placement

### In the box

Includes one (1) ea. 'A', 'B' and 'C' drills (for use with All FINE posts: S090, S091, S100, S105, S106, S120, and S125)

## Medium Plastic Burn-Out post Refill



### Features/Description

- Glass fibre, plastic pattern or stainless steel posts.
- Each post style is available in two sizes - Fine and Medium.
- C-I™ White Posts give you strength, aesthetics and significantly enhanced radiopacity.
- C-I™ Plastic Pattern Posts are easily used for direct or indirect techniques.
- C-I™ Stainless Steel Posts provide maximum strength for amalgam or composite cores.
- All posts in the C-I™ System use the same calibrated C-I™ Drills for quick and easy placement
- Includes 10 MEDIUM yellow plastic burn-out posts.

## #2 Medium Stainless Steel Temporary Post Refill

### Features/Description



- Glass fibre, plastic pattern or stainless steel posts.
- Each post style is available in two sizes - Fine and Medium.
- C-I™ White Posts give you strength, aesthetics and significantly enhanced radiopacity.
- C-I™ Plastic Pattern Posts are easily used for direct or indirect techniques.
- C-I™ Stainless Steel Posts provide maximum strength for amalgam or composite cores.
- All posts in the C-I™ System use the same calibrated C-I™ Drills for quick and easy placement.

Maxillo-facial

The background features abstract, overlapping geometric shapes in various shades of green, ranging from light lime to dark forest green. These shapes are primarily located on the right side of the frame, creating a modern, layered effect. The text 'Maxillo-facial' is centered in a clean, sans-serif font.

## **Bioresorbable Matrix Barrier**

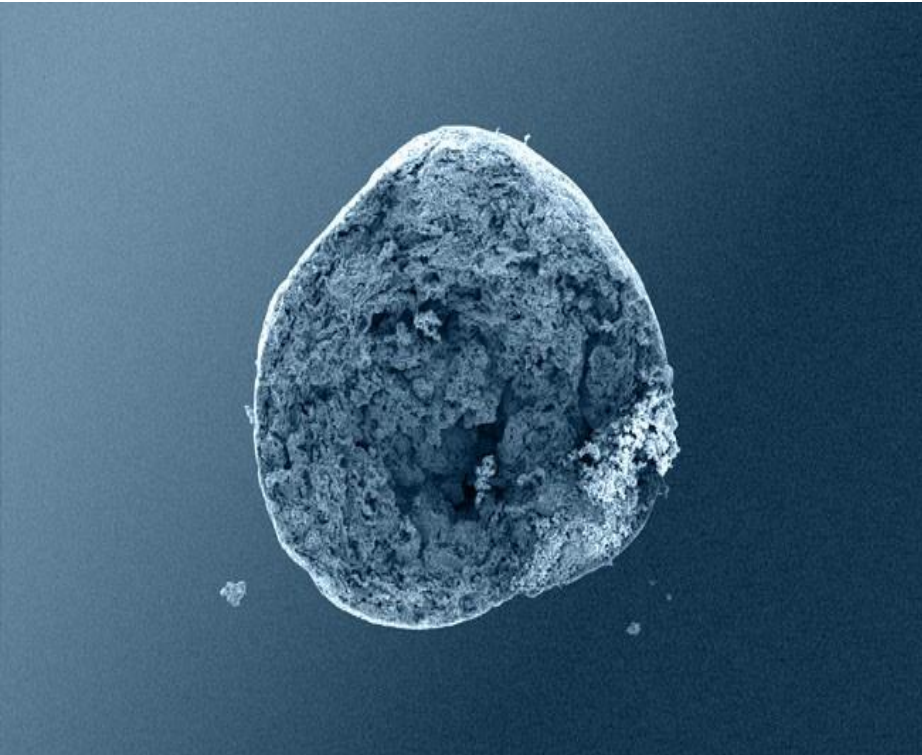


A line of translucent, resorbable barrier membranes with a unique, multi-layer design that facilitates periodontal tissue integration.

- 100% synthetic with predictable resorption<sup>1</sup>
- Can be cut and shaped to precisely cover the defect site
- Becomes malleable within seconds at body temperature, making it easy to handle and control
- Available in various shapes and sizes, with and without ligatures for your guided bone and tissue regeneration cases

Each unit contains one dental membrane

## GUIDOR *calc-i-oss*



### Features/Description

- Alloplastic bone graft granules
- Products are available in two resorption formats:

GUIDOR calc-i-oss CLASSIC

GUIDOR calc-i-oss CRYSTAL

Both formats offer:

- 100 % Alloplastic material (no substances of animal or human origin)
- High porosity - provide increased osteoconductivity and bone formation in comparison with materials without micropores as an open micropore system allows for optimal fluid circulation.
- Stable spherical granules
- No crumbling or fragmentation during application. This limits formation of micro particles, which may be associated with

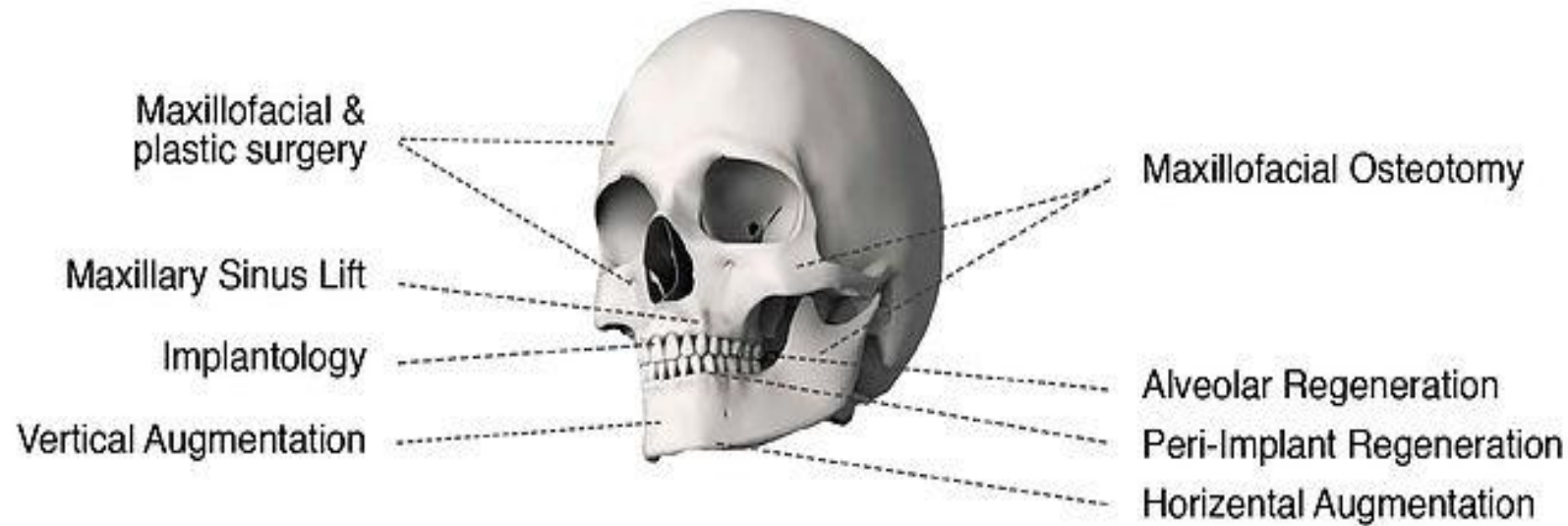


- Teebone is an osteoconductive alloplastic material designed for bone substitution.
- Its biphasic nature allows a controlled resorption profile similar to human bone.
- Due to its composition, 75% Hydroxyapatite and 25% Beta tricalcium phosphate, Teebone regenerates new bone through two different stages of activation.
- The breakdown of B-TCP by the osteoclast will free ions that enhance bone growth, while the hydroxyapatite acts as support for the bone ingrown within the graft, being slowly substituted

- It is not necessary to use membrane, due to its physical and mechanical properties.
- Teebone is very hydrophilic which confers an excellent cohesivity between the particles.
- Allows the perfect monitorization of osteointegration.

- Teebone is replaced by new vital bone within 6 - 24 months.
- 100% synthetic and 100% resorbable
- Teebone induces a remarkable vascularisation.

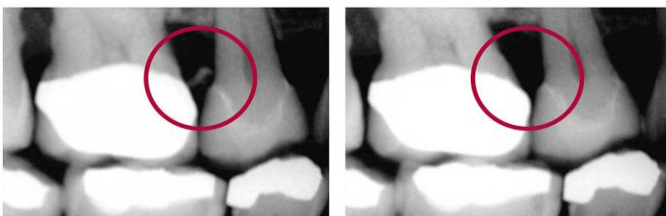
# Indications for Teebone



# SEcure® Resin Cement System



SEcure®



SEcure®'s radiopacity enables identification of excess cement that extrudes subgingivally during crown cementation.

Once detected the excess cement can easily be removed.

Michael Keller, DDS

## Features/Description

- Quick and easy to use.
- Superior long-term bond strength.
- No separate etching when using Parkell's unique, low viscosity, self-etch primer.
- Seals and protects the tooth from marginal leakage.
- Dual-cure will also cure in areas where a curing light can't reach.
- Virtually no post-op sensitivity.
- Works great with Brush&Bond® and Brush&Bond® Universal

## In the box

- 1) Bottle of Self-Etch Primer (3ml)
- (1) Syringe of Translucent Shade Resin Cement (9g)
- Brushes
- Mixing tips
- Mixing well.

# MucoHard™ Reline Resin 50ml Cartridge



## Features/Description

- Super-fast and easy to use.
- Non-runny, thixotropic consistency won't gag the patient.
- Auto-polymerizing resin formula sets without a curing light.
- Eliminates powder/liquid mess.
- Ideal for small jobs like attachment pickups as well as full relines.
- Translucent pink polymer blends beautifully with most denture base shades.
- Works with the same 50ml dispensing gun as your impression material.

## BMS 015



### Features/Description

- Resin Repair material self-curing. Methyl-Methacrylate co-polymer cold self-curing. Cadmium free. EN ISO 20795-1 . Type I.
- **Applications:** Repairing, Relining and Rebasing of full and partial dentures. Partial dentures.
- **Packaging:** Kit powder 500 g + liquid 250 ml Available also in separate packages:  
powder : 500g , 1kg in aluminium bag ; 5kg , 50 kg in drum  
liquid : 250ml , 500 ml in glass bottle ; 5l , 190 l in drum
- It is a universal liquid.
- **Available:** Shade Pink, Shade Pink-Veined

The background features abstract, overlapping geometric shapes in various shades of green, ranging from light lime to dark forest green. These shapes are primarily located on the right side of the frame, creating a dynamic, layered effect. The rest of the background is plain white.

OPERATIVE

# Etching Gel



## Features/Description

- Consistent etching for strong bonds
- Easily visible during placement
- 37% concentration (industry standard)
- Washes clean for predictable adhesion

## In the box

- Three 2ml syringes
- 30 Applicator Tips

## Super etch



### **37% wt phosphoric acid**

- 30 to 40% phosphoric acid
- optimally etches in 15 to 20 seconds
- Lower concentrations require longer contact time, unnecessarily delaying procedures.

### **No interference with adhesive**

- Super Etch inorganic silica gel thickener is no obstacle to the adhesive
- Other etchants block adhesives with a wax-like polymer residue which can inhibit penetration and bonding.

## Dye free Etchant



- **A clear dye free 37% liquid etchant is also available for patients who suffer dye allergies.**
- Blue tint gel
- ✓ High visibility for precise placement.
- Super Etch creates micropores in the enamel surface and removes the smear layer to unblock dentinal tubules
- It promotes adhesive resin penetration and resin tag formation
- Super Etch is vital for the restoration's mechanical retention.

# Pain-Free Gel Dentin Desensitizer



## Features/Descriptions

- Gel consistency allows accurate placement and no running.
- Relief within seconds
- Easy, no mess dispensing
- Unique Tripolymer formula for effective, long term results

## *In the box*

- Three 3ml syringes
- 30 Needle Nose Intraoral Applicator Tips

## Universal Adhesive Kit

### Features/Description



- Reliable micro-mechanical and chemical adhesion of dentin and enamel regardless of the etching technique desired.
- Compatibility with a variety of substrates-including metals, composites and ceramics.
- Desensitization of dentin due to excellent penetration of the resin into the tubules.
- An initial pH of 2.0 making it compatible with light-cured, self-cured and dual-cured resins.
- A low film thickness of 3 microns (particularly important when cementing crowns, bridges or other indirect restorations)

### In the box

- One 5ml bottle of Universal Adhesive
- Disposable brushes
- Mixing dish

# C&B Metabond® Quick Adhesive Cement System

## Features/Description



- Cement crowns on short or overly tapered abutments.
- Re-cement bridges or posts that repeatedly loosen due to compromised retention or patient habits.
- Perform fast, chairside repairs such as mending broken abutments, repairing porcelain fractures, splinting periodontally compromised teeth, adding teeth to removable prostheses, or bonding directly to composite or acrylic-based prostheses.
- Place direct pulp-caps, repair root perforations in “hopeless cases” and so much more

### In the box

- Liquid Dentin Activator
- Enamel Gel Etchant
- Quick! Base and Catalyst
- Universal Gel Dentin Activator
- Radiopaque Shade L and Clear L powders
- Ceramic mixing dish with temperature strip.



# Easy Temporary Cement



## Features/Description

- Strong adhesion to temporary prostheses
- Low viscosity allows complete seating of temporaries
- Translucent shade blends well with crown and tooth margins
- Auto-mix syringe and dual-cure capabilities reduce chairside time
- Eugenol free

## In the box

- (1) 5ml automix syringe
- (10) mixing tips.

# Retrieve™ DC Implant Cement Kit



## Features/Description

- Features Dual-Cure Capability (Light curing 20 seconds)
- Working Time: 2:00 Minutes
- Gel Stage for Easy Clean –up: 2-3 Minutes
- Self-Cure Setting Time: 5:00 Minutes
- Strong Adhesion to Implants Composed of Metal Alloys and Ceramics
- Increased Radiopacity: 300% Aluminium-Improvement over original Retrieve with 110-120% Radiopacity and Premier® Dental's Implant Cement with 60-80% Radiopacity.

## In the box

- One 5ml dual-chamber cartridge
- 10 mixing tips.

# SEcure® Self-Etch Primer



## Features/Description

- Quick and easy to use.
- Superior long-term bond strength.
- No separate etching when using Parkell's unique, low viscosity, self-etch primer.
- Seals and protects the tooth from marginal leakage.
- Dual-cure will also cure in areas where a curing light can't reach.
- Virtually no post-op sensitivity.
- Works great with Brush&Bond® and Brush&Bond® Universal
- Comes in a 3ml bottle

## Amalgambond Plus Complete Kit



### Features/Description

- Strong, self-cure bonds without the need for a curing light.
- Works equally well with composites, alloys and ceramics.
- Minimally invasive preps eliminate the need for pin retention.
- No varnish or liners needed.
- Dramatically reduces chances of marginal leakage.
- Zero post-op sensitivity.

### *In the box*

- Dentin/enamel gel activator
- Adhesive agent
- Amalgambond base
- Amalgambond catalyst
- High-performance additive powder
- Accessories.

# Brush & Bond Kit w/ Standard Activator Brushes



## Features/Description

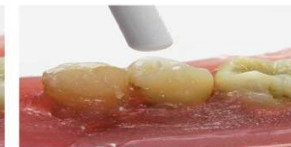
- Bonds direct and indirect composite restorations to all tooth surfaces.
- Permanently seals the tubules to prevent sensitivity.
- Protects the pulp against microleakage and bacterial invasion.
- Creates an acid and wear-resistant shield for the tooth.
- Doubles the surface hardness of the preparation.
- Cures with all currently available curing lights.
- Low film thickness wo

**Brush & Bond**

Apply in just three easy steps.



1. Apply



2. Dry



3. Cure

## In the box

- One 3ml bottle of Dentin/Enamel Bonding Liquid
- 100 Standard Activator Brushes
- Mixing well

## LC Base Bulk-Fill Base Restorative Composite - Unit Dose



- Resin-based, highly-flowable, bulk-fill base for use under anterior or posterior composite resins like LC Fill™, HyperFIL™, HyperFIL™ HAp or any other flowable or conventional composite).
- Excellent flowability to conform to irregular deep cavity preps.
- 4mm depth of cure.
- Self-levels for optimal coverage.
- Minimal polymerization shrinkage for reliable marginal seals.
- Universal shade nicely matches deep areas of most posterior teeth.
- Also available in syringes.

# HyperFIL® Bulk-Fill Composite Intro Kit



## • Features/Description

- A true bulk-fill restorative.
- Excellent aesthetics & shade stability.
- Dual-Cure—no need for incremental layering and curing.
- Nano-filled for durability and optimized polishability.
- Low viscosity - flows slightly to conform to the cavity preparation.
- Available in 2 Shades: Universal & Enamel.
- Radiopaque.
- Works perfectly with Brush&Bond Universal & most other bonding agents

## In the box

- One HyperFIL™ Enamel Shade Kit
- One HyperFIL™ Universal Shade Kit
- One 10ml Cartridge Dispensing Gun



## HyperFIL® Bulk-Fill Composite - Universal Shade (A2/B2)



## HyperFIL® HAp Bulk-Fill Composite - Enamel Shade (A1/B1)



# DuraFinish™ All-Cure Composite Glaze



## Features/Description

- Provides a dazzling, stain-resistant surface for all temporaries and composite restorations.
- All-Cure polymerizes with ANY light - LED, halogen, PAC or laser.
- Resists surface abrasion significantly better than traditional glazes.
- Requires no polishing.
- Nano-filled for long-lasting, superior durability.

## In the box

- 5ml bottle of adhesive glaze
- Brushes
- Mixing well



Un-glazed



Temporary bisacryl laminates glazed with DuraFinish All-Cure after one month in the mouth.

# DuraFinish™ Composite Glaze (for use with halogen light only)



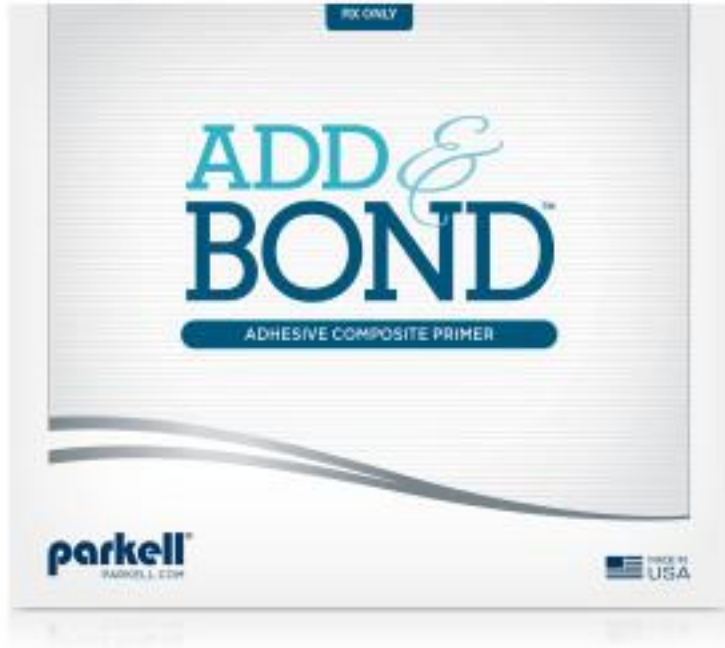
## Features/Description

- Provides a dazzling, stain-resistant surface for all temporaries and composite restorations.
- Polymerizes with HALOGEN CURING LIGHTS ONLY.
- DuraFinish ALL-CURE also available (cures with any light)
- Resists surface abrasion significantly better than traditional glazes.
- Requires no polishing.
- Nanofilled for long-lasting, superior durability

## In the box

- 5ml adhesive glaze
- Brushes
- Mixing well

# Adhesive Composite Primer



## Features/Description

- Quickly repairs fractured composite.
- Improves the adhesion of resin or fiberglass posts.
- Repair or re-marginate a bis-acrylic temporary.
- Provides a thin, flexible yet strong, layer between existing and new composite

# Saliva ejectors



## Features/Description

- Non Toxic Flexible Saliva Ejector With metal wire. Totally free of glue
- **Tip:** Fixed or Removable  
**Available Length:** 13cm , 15cm  
**Available Colours:** Transparent, Blue, Green, Orange, Various colours on request  
**Packaging:** 50 Bags of 100 Pcs / Carton





ORTHODONTIC

S

## Fine Stainless Steel Starter Kit - Flat-head



- Glass fibre, plastic pattern or stainless steel posts.
- Each post style is available in two sizes - Fine and Medium.
- C-I™ White Posts give you strength, aesthetics and significantly enhanced radiopacity.
- C-I™ Plastic Pattern Posts are easily used for direct or indirect techniques.
- C-I™ Stainless Steel Posts provide maximum strength for amalgam or composite cores.
- All posts in the C-I™ System use the same calibrated C-I™ Drills for quick and easy placement.

### **In the box**

- Includes 20 FINE flat-head stainless steel posts, 20 plastic core patterns and 3 drills - FINE (ABC).

# Lotus Plus DS Self-Ligating Bracket System



**A Passive SLB That Addresses Finishing Issues**

# Lotus Plus DS – Passive Features and Benefits

- **Superior Planar Nickel-Titanium Door** – With flexible independent tabs for reduced friction and improved rotational control
- **Familiar Mini-Twin Design** – With a deep v-channel and vertical scribe line for accurate placement.
- **Intelligent Hook Design** – Hooks are at a 15° angle to reduce interference with gingival tissue. The ball hook is further rounded to minimize soft tissue irritation and improve patient experience.
- **Micro-Etched Base** – With mushroom shaped pylons for 40% higher bond strength than a standard mesh pad.
- **Open Design** – Allows for maximum patient hygiene.
- **Smooth tie wing undercuts** – For patient comfort and secure ligation.
- **Compound contour base** – Provides simplified and accurate bracket placement.
- **Lowest possible profile** – With rounded facial contours for maximum patient comfort and aesthetic appearance.
- **Hyper efficient orthodontics** – Designed with the lowest possible profile height while preserving straight wire mechanics.





## **Offset Compound-Contour**

**Cuspid Base** – for greater surface area and accurate fit. Features an adhesive overflow catch in the centre of the base for reduced flash clean-up.



**Mushroom shaped pylons** – which grasp the adhesive and provide 40% higher bond strength over standard 80-gauge mesh pads.



**The Lotus Plus DS Base** – combined with a simple, low-force opening door, brackets will stay on throughout the length of treatment.

# PROSTHODONTI CS

The background features abstract, overlapping geometric shapes in various shades of green, ranging from light lime to dark forest green. These shapes are primarily located on the right side of the frame, creating a modern, layered effect. The text is centered on the left side of the image.

## Quick Cinch Heavy: Super Cartridge



### Features/Description

- Exceptionally accurate, hydrophilic and strong.
- Use as a final impression material or an alginate substitute.
- 90 sec. set, 60 sec. working time.
- Cinch Heavy Body is also available in 50ml cartridges
- Cinch is available in a wide variety of viscosities, final hardness and setting times

### In the box

- One 380ml Super Cartridge
- Mixing tips

## Cinch Platinum: Super Cartridge

### Features/Description



- Exceptionally accurate, hydrophilic and strong.
- Use as a final impression material or an alginate substitute.
- 4 min. set, 3 min. working time.
- Cinch Platinum is also available in tubes and 50ml cartridges
- Cinch is available in a wide variety of viscosities, final hardness and setting times

# TriPhasix™ Alginate 10lb Package



## Features/Description

- Delivers a super-smooth impression
- Captures minute detail as small as 50 microns
- Convenient colour-changing formula
- Noticeably denser for greater dimensional stability.
- Pleasant French Vanilla flavour
- Costs much less than other popular brands

# Modeling Wax



CE

## Overview:

- High quality wax.
- Available in gingiva colour.
- Soft for easy moulding

## Disposable Impression Trays



### Monotrays

- Set of 12 disposable perforated impression trays in polystyrene. Each size is available in separate packages as following:  
same quantity of  
U1 – L1  
U2 – L2  
U3 – L3  
U4 – L4  
4 partials

# VeriModel OS White 3D Print Resin



- **Technical Specifications**
- **Flexural Strength (ASTM D790)**  
≥80 Mpa
- **Flexural Modulus (ASTM D790)**  
≥1850 Mpa
- **Elongation at Break (ASTM D638)**  
14%
- **Viscosity**  
600-800 cP at 25° C
- **Density**  
ca. 1.1g/ml
- **Colour**  
White

# Vericore ZR PRO



## Features/Description

- High flexural strength (twice the strength of anterior zirconia)
- Can be used for posterior bridges over 3 units
- Natural, vital aesthetics
- Higher value than *anterior* zirconia materials
- Ideal for monolithic crowns and bridges or substructures
- White and pre-shaded discs
- 98mm discs

# PERIODONTICS

The background features abstract, overlapping geometric shapes in various shades of green, ranging from light lime to dark forest green. These shapes are primarily located on the right side of the frame, creating a modern, layered effect. The rest of the background is plain white.

# GUIDOR *easy-graft*



## Features/Description

- first mouldable, alloplastic bone graft substitute with in-situ hardening.
- GUIDOR *easy-graft* provides:
  - ✓ no substances of animal or human origin
  - ✓ high porosity & osteoconductivity
  - ✓ syringe application
- available in **CLASSIC** and **CRYSTAL** formats offering a choice of resorption profiles.

THE END